



VALVES | DESCRIPTION

Building a functional and efficient dry suction system with a variety of working functions requires some kind of valve to open or shut the air stream.

The line of CP valves consists of various models - mechanical, electrical or with electrical switch built in for activation of the suction motor.

The hand valves come with or without an electrical switch for activating the suction motor. Furthermore they are available for inserting between a flexible mouth piece and a noise reducer on Superflex suction arm.

The motor valve is available in 230 V and 24 V. These valves are activated by a switch and have different functions, like starting the suction motor.

The adjustment valve is used to reduce the air volume in a certain part of a system.

Please contact us for further information.

VALVES | FEATURES

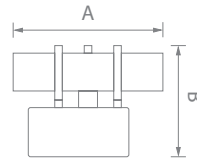
Features of the valves include:

- ✓ Manual or motor regulation
- ✓ With or without a switch system
- ✓ Better ergonomic
- ✓ Very tight closing

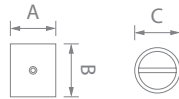




Hand valve



Motor valve



Adjustment valve

DIMENSIONS

PRODUCT	ITEM NO.	WIDTH (A)	HEIGHT (B)	DEPTH (C)	INLET	OUTLET	VOLTAGE	WEIGHT
Hand valve	903650	90 mm	200 mm	50 mm	Ø 50 mm	Ø 50 mm	-	0,35 kg
Hand valve / ins.	903655	90 mm	200 mm	50 mm	Ø 50 mm	Ø 50 mm	-	0,35 kg
Hand valve / swc.	903750	90 mm	200 mm	50 mm	Ø 50 mm	Ø 50 mm	-	0,35 kg
Hand valve / swc / ins.	903755	90 mm	200 mm	50 mm	Ø 50 mm	Ø 50 mm	-	0,35 kg
Motor valve	901231	200 mm	147 mm	72 mm	Ø 50 mm	Ø 50 mm	230 V	0,8 kg
Motor valve	901243	200 mm	147 mm	72 mm	Ø 50 mm	Ø 50 mm	24 V	0,8 kg
Adjustment valve	901226	60 mm	70 mm	60 mm	Ø 50 mm	Ø 50 mm	-	0,3 kg

RELATED PRODUCTS



PRODUCT	PAGE NO.
CP Suction motors	SM 03



PRODUCT	PAGE NO.
Suction hoses	MS 01



PRODUCT	PAGE NO.
Superflex	SA 02



PRODUCT	PAGE NO.
Filters	FL 02



PRODUCT	PAGE NO.
Mount parts	MS 02



PRODUCT	PAGE NO.
G-Box	SD 01